

## ITL 9-1 - industrial air cooled triode with output power 25 kW

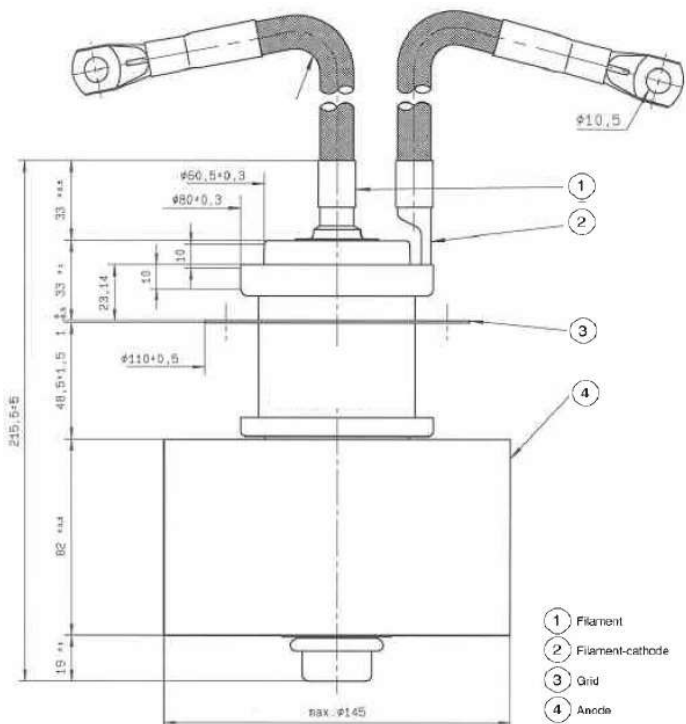
### Electrical characteristics:

Filament Voltage	5.8	V
Filament Current	145	A
Amplification Factor	22	
Interelectrode capacitances		
Cga	21	pF
Cgc	55	pF
Cca	1	pF

### Typical operation:

	1		2	
Frequency	30	MHz	30	MHz
DC Plate Voltage	10	kV	8	kV
DC Grid Voltage	860	V	775	V
DC Plate Current	3.3	A	3.4	A
DC Grid Current	0.35	A	0.40	A
Grid Dissipation	76	W	88	W
Plate Input Power	33	kW	27.2	kW
Plate Output Power	24.7	kW	19	kW
Plate Dissipation	9.6	kW	8.6	kW
Grid Resistance	1.75	kΩ	1.30	kΩ

Maximum Weight	4.4	kg
Maximum Length	216	mm
Maximum Diameter	145	mm
Operating position	vertical	
Temperature at any point on tube envelope	max 220	°C
Anode cooling	forced air	



### Maximum ratings:

DC Plate Voltage	12	kV
DC Plate Current	4	A
Grid Dissipation	0.35	kW
Plate Dissipation	8.5	kW
Plate Output Power	25	kW